

# SX 06

## Stainless Steel, Borehole Deep Well Pumps



### FEATURES

- Rpm: 2900
- Rotation: CCW
- Maximum sand content is 50 gr/m<sup>3</sup>

### MATERIALS

#### Diffuser & Impeller:

AISI 304L - Stainless Steel

#### Pump Shaft / Coupling:

AISI 420 - Stainless Steel

#### Strainer:

AISI 304 - Stainless Steel

AISI 316 - Stainless Steel

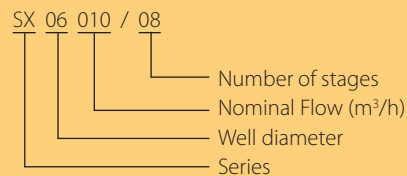
### APPLICATIONS

- Water supply from deep wells.
- Pressure boosting and water distribution in civil and industrial systems.
- Supply of surge tanks and reservoirs.
- Firefighting and washing systems.
- Water table level control.
- Irrigation.
- Mining Industry.
- Golf courses.

### SPECIFICATIONS

- Delivery: Up to 250 m<sup>3</sup>/h
- Head: Up to 650 m

### IDENTIFICATION

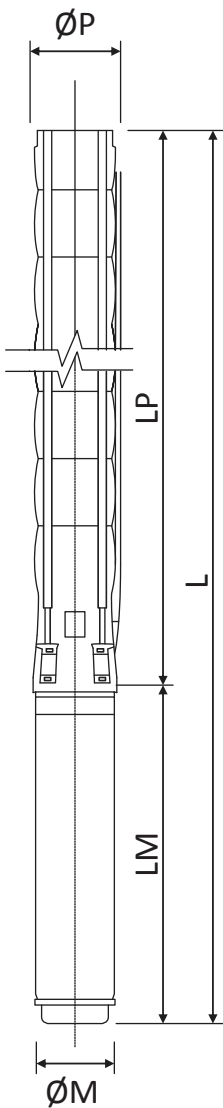


# SX 06

## Stainless Steel, Borehole Deep Well Pumps

### SX 06060

**Outlet Connection Diameter:**  
4" Inside Threaded



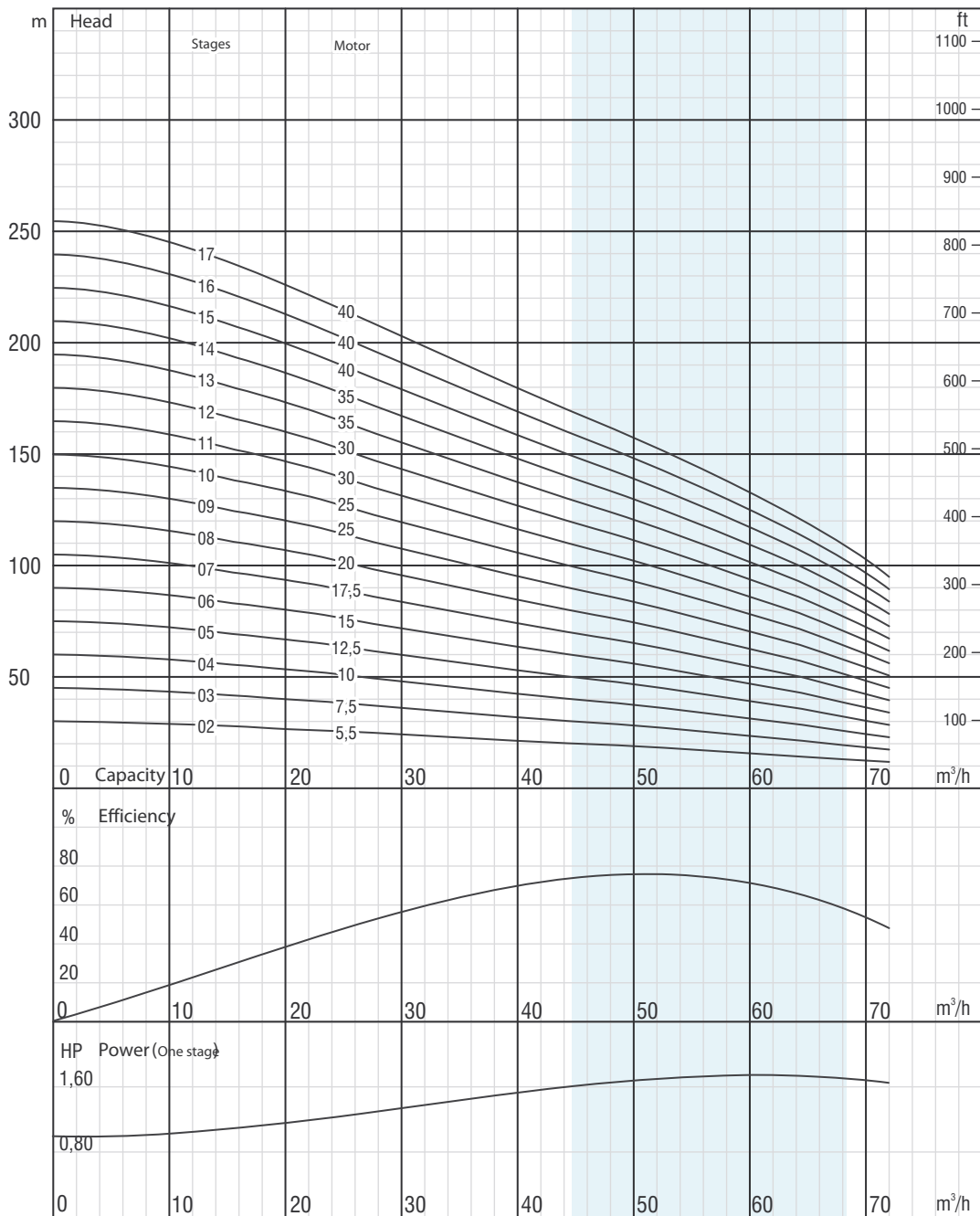
Product Code	Stage	Motor		Dimensions					Weight		
		kW	HP	L	LM	LP	$\varnothing M$	$\varnothing P$	Motor	Pump	Total
SX 06060/02	2	4	5,5	1126	649	477	142	144	40	10	50
SX 06060/03	3	5,5	7,5	1284	678	606	142	144	43,5	12	56
SX 06060/04	4	7,5	10	1477	758	719	142	144	50	14	64
SX 06060/05	5	9,3	12,5	1632	800	832	142	144	55	16	71
SX 06060/06	6	11	15	1796	851	945	142	144	60	18	78
SX 06060/07	7	13	17,5	1969	911	1.058	142	144	65	20	85
SX 06060/08	8	15	20	2144	973	1.171	142	144	72	23	95
SX 06060/09	9	18,5	25	2279	1006	1.273	142	144	76	25	101
SX 06060/10	10	18,5	25	2403	1006	1.397	142	144	76	27	103
SX 06060/11	11	22	30	2605/2389	1106/890	1.499	142/172	144	87/86	29	116/115
SX 06060/12	12	22	30	2729/2513	1106/890	1.623	142/172	144	87/86	32	119/118
SX 06060/13	13	26,5	35	2942/2665	1217/940	1.725	142/172	144	98/91	34	132/125
SX 06060/14	14	26,5	35	3066/2789	1217/940	1.849	142/172	144	98/91	37	135/128
SX 06060/15	15	30	40	3198/2931/3007	1247/980/1056	1.951	142/172/192	144	103/103/129	39	142/142/168
SX 06060/16	16	30	40	3300/3033/3109	1247/980/1056	2.053	142/172/192	144	103/103/129	42	145/145/171
SX 06060/17	17	30	40	3435/3168/3244	1247/980/1056	2.188	142/172/192	144	103/103/129	45	148/148/174

Product Code	Stage	Motor		Current	m <sup>3</sup> /h	0	43,2	57,6	61,2	64,8	64,4	72
		kW	HP			l/s	0	12	16	17	18	19
SX 06060/02	2	4	5,5	10,2	Head (meter)	30	20	16	15	14	13	11
SX 06060/03	3	5,5	7,5	13,6		45	30	24	23	21	19	17
SX 06060/04	4	7,5	10	17,2		60	40	33	30	28	25	22
SX 06060/05	5	9,3	12,5	20,8		75	51	41	38	35	32	28
SX 06060/06	6	11	15	23,7		90	61	49	46	42	38	33
SX 06060/07	7	13	17,5	28,7		105	71	57	53	49	44	39
SX 06060/08	8	15	20	33,1		119	81	65	61	56	51	44
SX 06060/09	9	18,5	25	41,8		134	91	73	68	63	57	50
SX 06060/10	10	18,5	25	41,8		149	101	82	76	70	63	56
SX 06060/11	11	22	30	48,5		164	111	90	84	77	70	61
SX 06060/12	12	22	30	48,5		179	121	98	91	84	76	67
SX 06060/13	13	26,5	35	56,4		194	132	106	99	91	82	72
SX 06060/14	14	26,5	35	56,4		209	142	114	107	98	89	78
SX 06060/15	15	30	40	64,6		224	152	122	114	105	95	83
SX 06060/16	16	30	40	64,6		239	162	131	122	112	101	89
SX 06060/17	17	30	40	64,6		254	172	139	129	119	108	95

# SX 06

## Stainless Steel, Borehole Deep Well Pumps

SX 06060



The right to change design and all specifications without prior notice reserved.

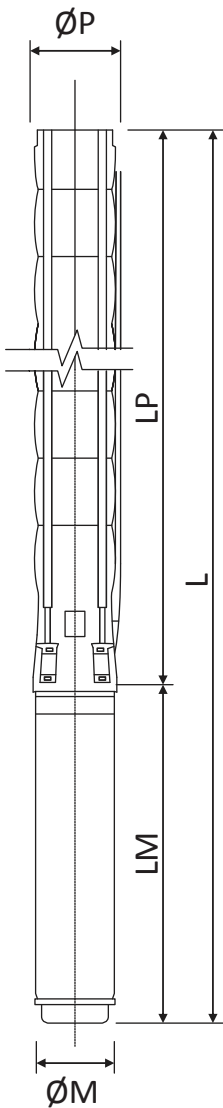
ISO 9906 Annex A

# SX 06

## Stainless Steel, Borehole Deep Well Pumps

### SX 06060

**Outlet Connection Diameter:**  
4" Inside Threaded



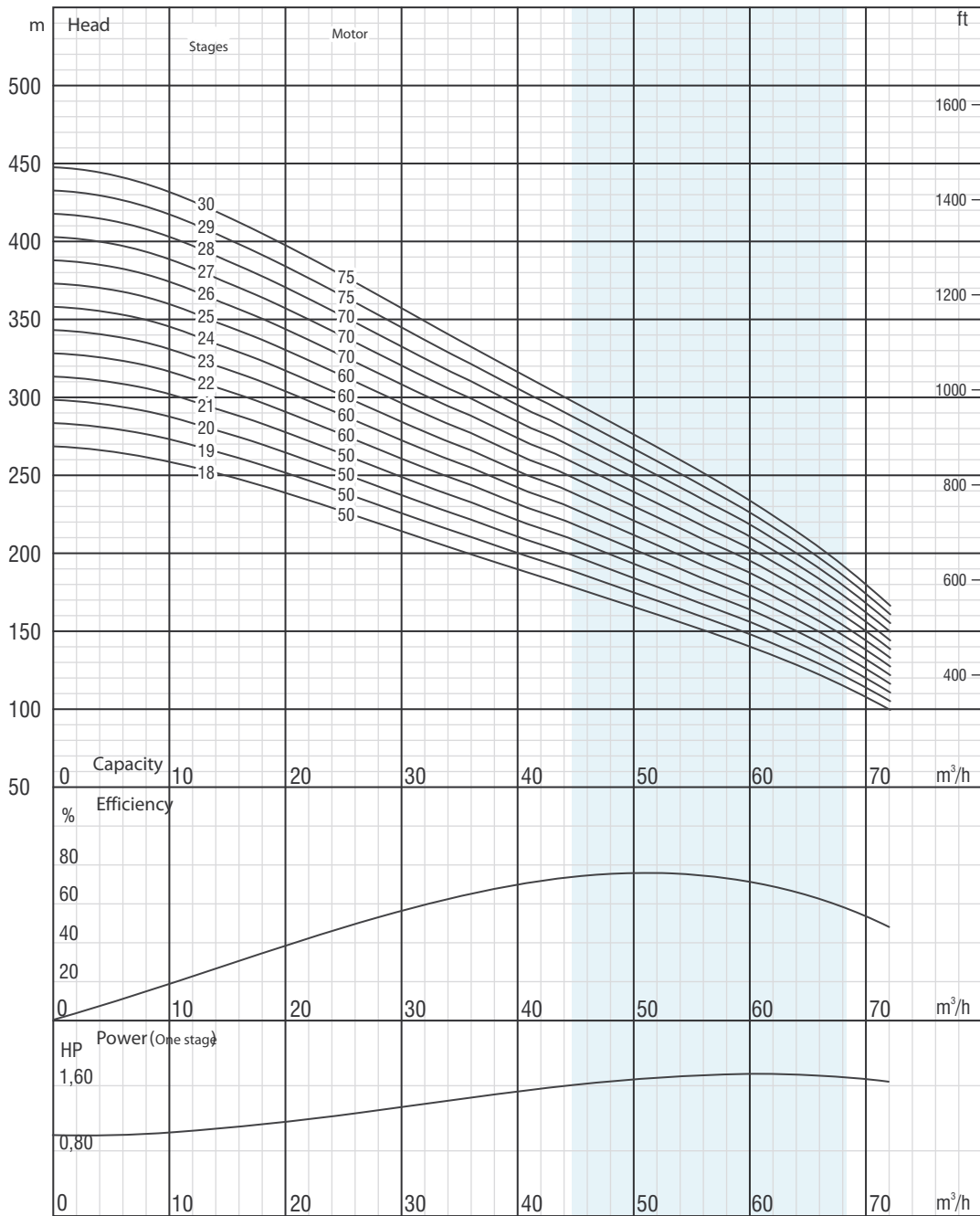
Product Code	Stage	Motor		Dimensions					Weight		
		kW	HP	L	LM	LP	ØM	ØP	Motor	Pump	Total
SX 06060/18	18	37	50	3637/3350/3406	1347/1060/1116	2.290	142/172/192	144	110/113/138	47	157/160/185
SX 06060/19	19	37	50	3739/3452/3508	1347/1060/1116	2.392	142/172/192	144	110/113/138	50	160/163/188
SX 06060/20	20	37	50	3841/3554/3610	1347/1060/1116	2.494	142/172/192	144	110/113/138	52	162/165/190
SX 06060/21	21	37	50	3987/3700/3756	1347/1060/1116	2.640	142/172/192	144	110/113/138	53	163/166/191
SX 06060/22	22	45	60	3881/3943	1139/1201	2.742	172/192	144	127/152	55	182/207
SX 06060/23	23	45	60	3983/4045	1139/1201	2.844	172/192	144	127/152	58	185/210
SX 06060/24	24	45	60	4316/4378	1139/1201	3.177	172/192	144	127/152	61	188/213
SX 06060/25	25	45	60	4418/4480	1139/1201	3.279	172/192	144	127/152	63	190/215
SX 06060/26	26	52	70	4599/4667	1218/1286	3.381	172/192	144	138/170	66	204/236
SX 06060/27	27	52	70	4701/4769	1218/1286	3.483	172/192	144	138/170	68	206/238
SX 06060/28	28	52	70	4847/4915	1218/1286	3.629	172/192	144	138/170	70	208/240
SX 06060/29	29	55	75	4981/5017	1250/1286	3.731	172/192	144	138/170	72	210/242
SX 06060/30	30	55	75	5105/5141	1250/1286	3.855	172/192	144	138/170	74	212/244

Product Code	Stage	Motor		Current	m <sup>3</sup> /h	0	43,2	57,6	61,2	64,8	64,4	72
		kW	HP			0	12	16	17	18	19	20
SX 06060/18	18	37	50	81,6	Head (meter)	269	182	147	137	126	114	100
SX 06060/19	19	37	50	81,6		284	192	155	145	133	120	106
SX 06060/20	20	37	50	81,6		299	202	163	152	140	127	111
SX 06060/21	21	37	50	81,6		314	213	171	160	147	133	117
SX 06060/22	22	45	60	90		329	223	180	167	154	139	122
SX 06060/23	23	45	60	90		344	233	188	175	161	146	128
SX 06060/24	24	45	60	90		358	243	196	183	168	152	133
SX 06060/25	25	45	60	90		373	253	204	190	175	158	139
SX 06060/26	26	52	70	106		388	263	212	198	182	165	145
SX 06060/27	27	52	70	106		403	273	220	205	189	171	150
SX 06060/28	28	52	70	106		418	283	228	213	196	177	156
SX 06060/29	29	55	75	109		433	293	237	221	203	184	161
SX 06060/30	30	55	75	109		448	304	245	228	210	190	167

# SX 06

## Stainless Steel, Borehole Deep Well Pumps

SX 06060



The right to change design and all specifications without prior notice reserved.

ISO 9906 Annex A